

# Saumlaki-Sorong MSY Seahorse



WALLACEA  
DIVE CRUISES

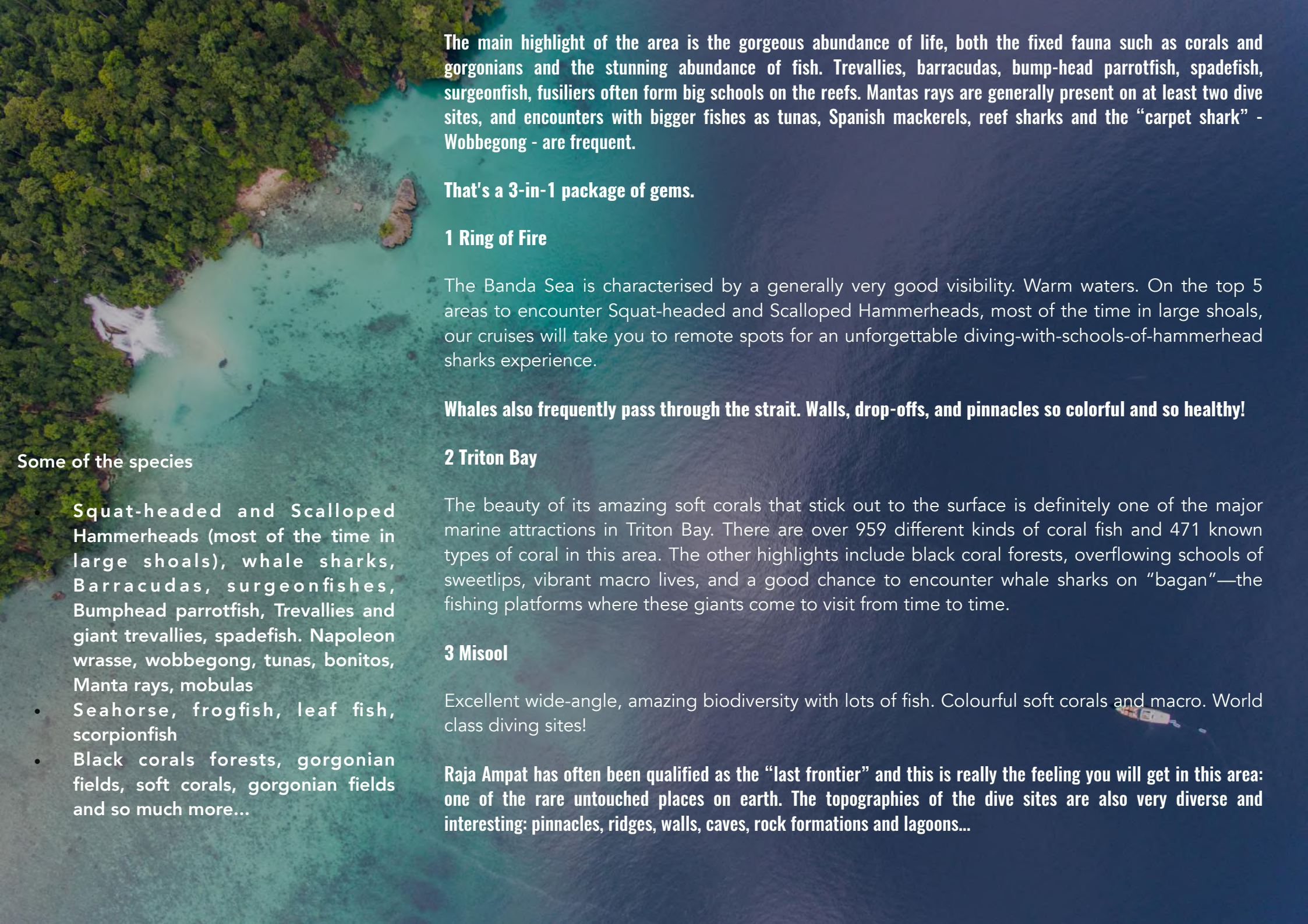


- ✓ GREAT COMFORT, LARGE CABINS
- ✓ OPTIMAL DIVING EXPERIENCE
- ✓ FRIENDLY ATMOSPHERE
- ✓ DELICIOUS CUISINE
- ✓ FREE NITROX









The main highlight of the area is the gorgeous abundance of life, both the fixed fauna such as corals and gorgonians and the stunning abundance of fish. Trevallies, barracudas, bump-head parrotfish, spadefish, surgeonfish, fusiliers often form big schools on the reefs. Mantas rays are generally present on at least two dive sites, and encounters with bigger fishes as tunas, Spanish mackerels, reef sharks and the “carpet shark” - Wobbegong - are frequent.

**That's a 3-in-1 package of gems.**

### **1 Ring of Fire**

The Banda Sea is characterised by a generally very good visibility. Warm waters. On the top 5 areas to encounter Squat-headed and Scalloped Hammerheads, most of the time in large shoals, our cruises will take you to remote spots for an unforgettable diving-with-schools-of-hammerhead sharks experience.

**Whales also frequently pass through the strait. Walls, drop-offs, and pinnacles so colorful and so healthy!**

### **2 Triton Bay**

The beauty of its amazing soft corals that stick out to the surface is definitely one of the major marine attractions in Triton Bay. There are over 959 different kinds of coral fish and 471 known types of coral in this area. The other highlights include black coral forests, overflowing schools of sweetlips, vibrant macro lives, and a good chance to encounter whale sharks on “bagan”—the fishing platforms where these giants come to visit from time to time.

### **3 Misool**

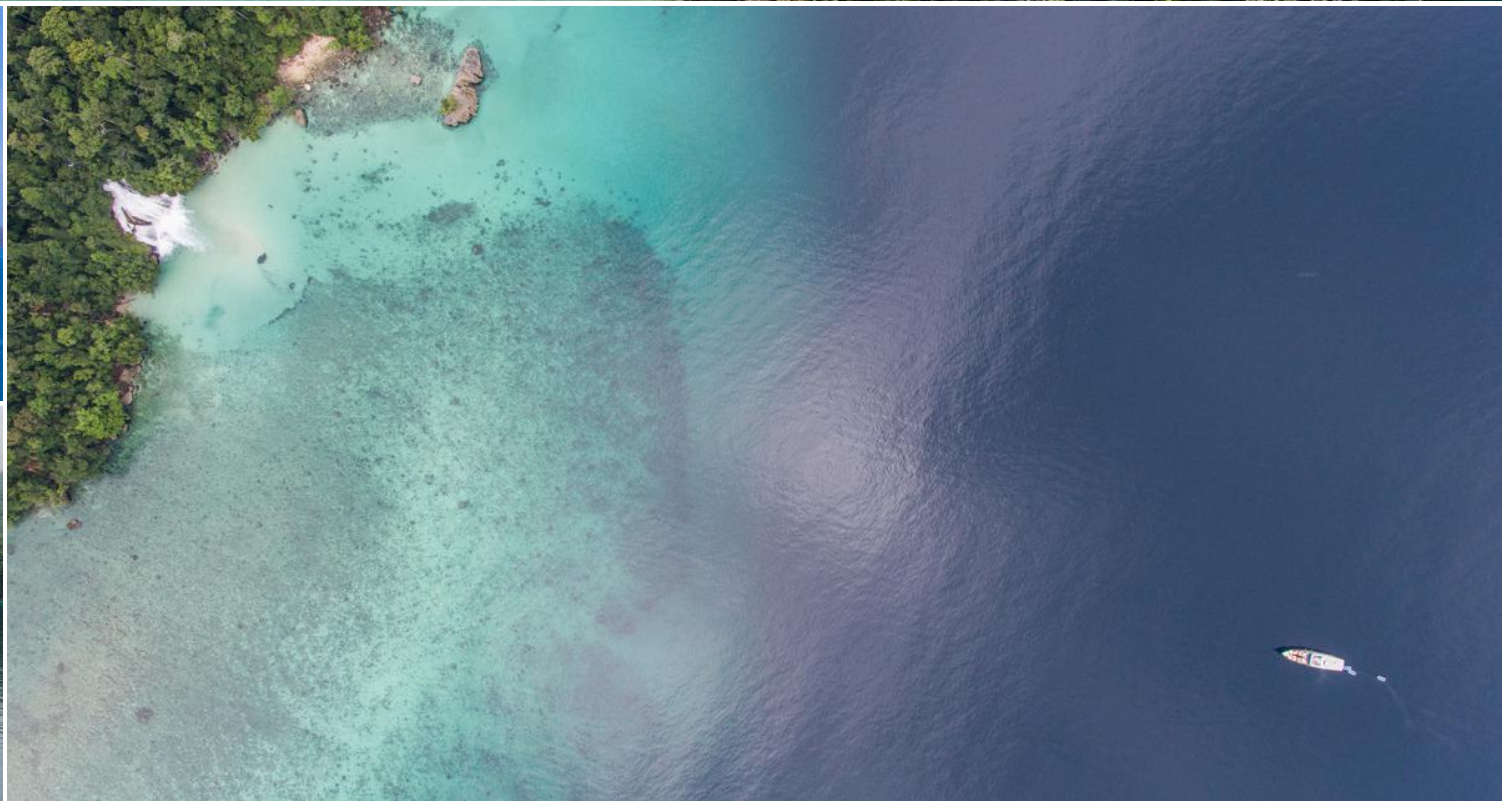
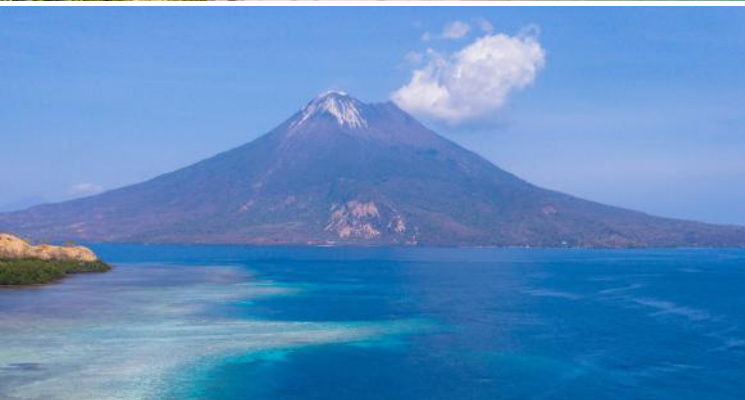
Excellent wide-angle, amazing biodiversity with lots of fish. Colourful soft corals and macro. World class diving sites!

**Raja Ampat has often been qualified as the “last frontier” and this is really the feeling you will get in this area: one of the rare untouched places on earth. The topographies of the dive sites are also very diverse and interesting: pinnacles, ridges, walls, caves, rock formations and lagoons...**

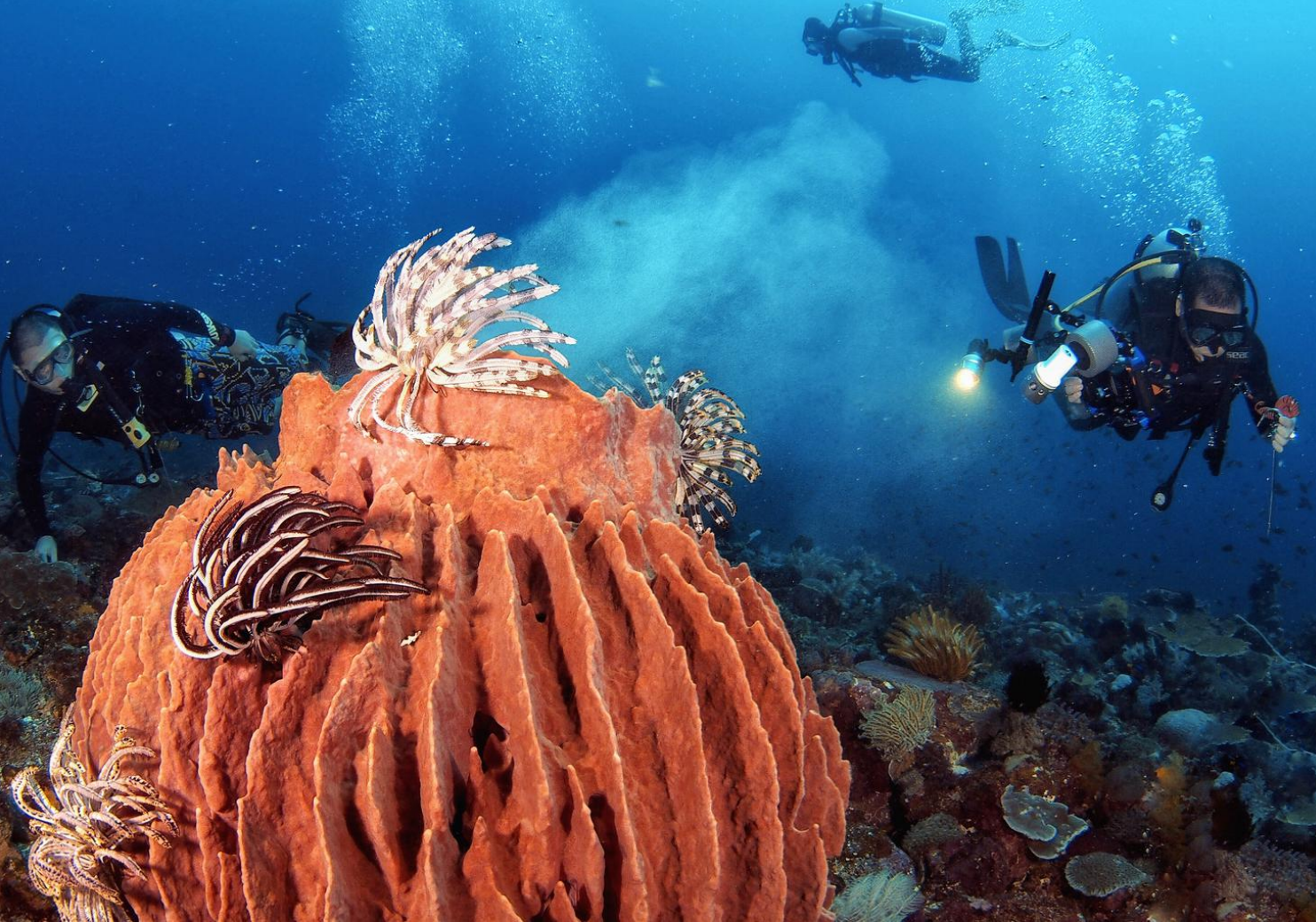
#### **Some of the species**

- **Squat-headed and Scalloped Hammerheads (most of the time in large shoals), whale sharks, Barracudas, surgeonfishes, Bumphead parrotfish, Trevallies and giant trevallies, spadefish. Napoleon wrasse, wobbegong, tunas, bonitos, Manta rays, mobulas**
- **Seahorse, frogfish, leaf fish, scorpionfish**
- **Black corals forests, gorgonian fields, soft corals, gorgonian fields and so much more...**

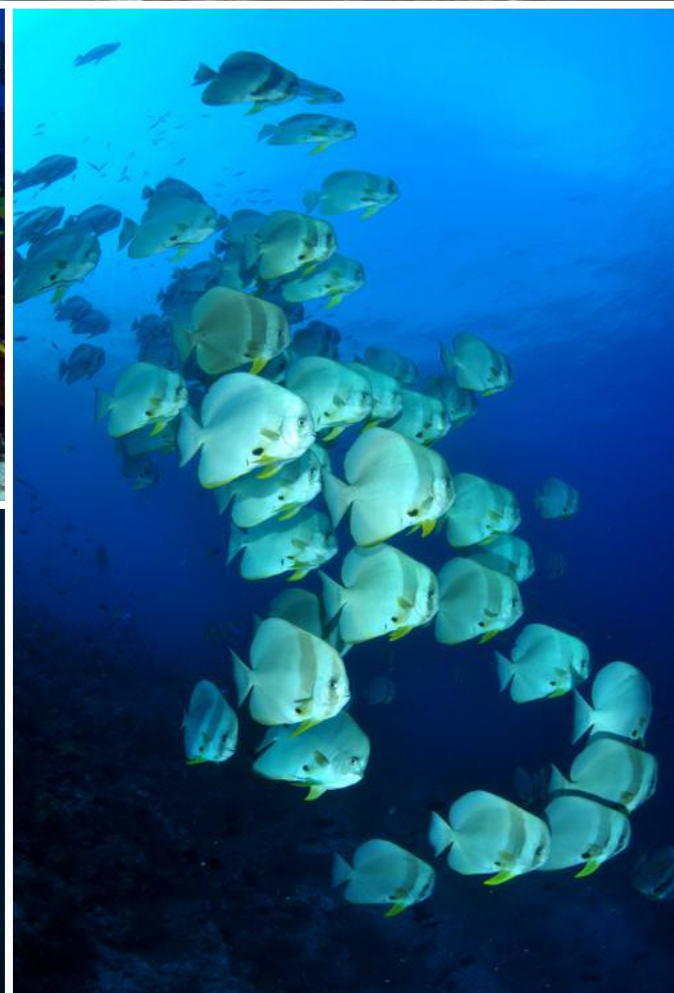
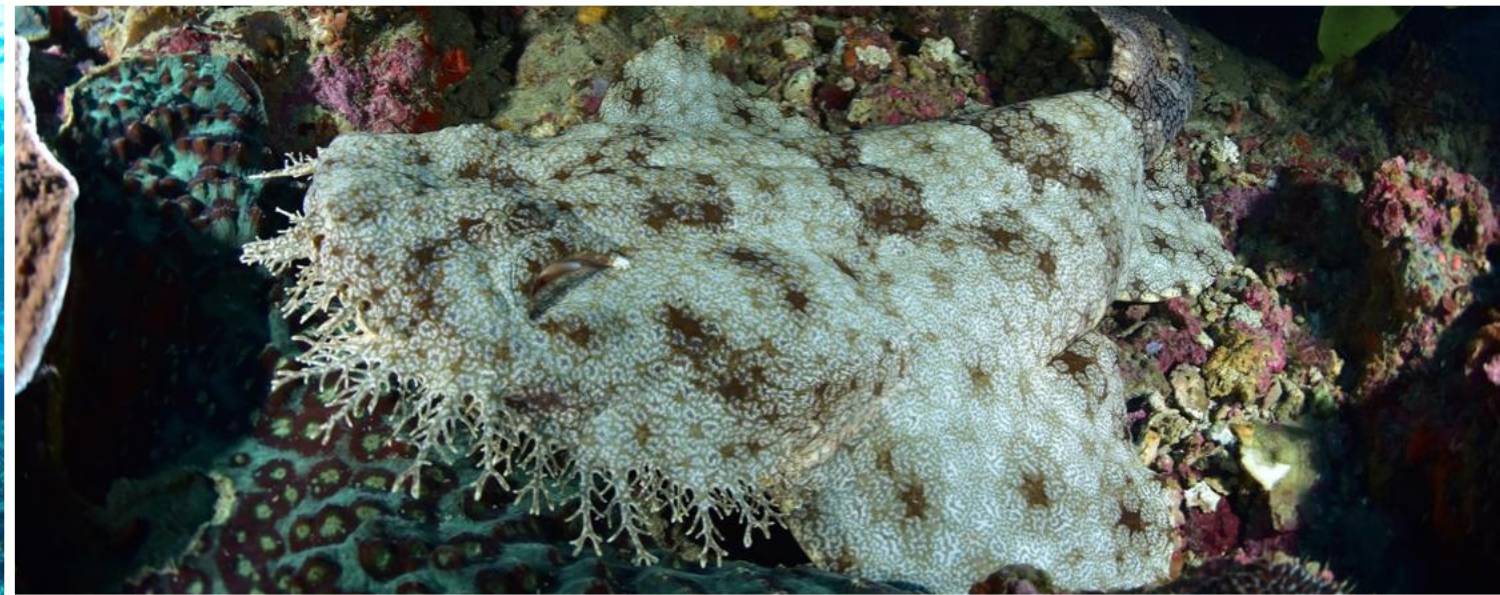














# Diving part



## Currents

Currents are constant on a number of dives while some others are really quiet. Some dives on reefs or pinnacles have to be done on the current exposed side in order to enjoy the best fish life and can therefore be slightly "sporty". Our dive guides always check the current conditions before the dive and will inform you of the conditions. A reef hook is recommended.

## Number of dives

During your cruise you will perform a **minimum of 52 dives**:

- \* 1 dive-guide/ 4 divers maximum (4 guides/16 divers)
- \* Free nitrox for certified divers (possibility of certification on board)
- \* 3 fibreglass tenders
- \* Our great crew is at your service to carry your tank and gear

## Visibility

In Raja Ampat and Triton Bay's waters are dense and visibility can rapidly change. Commonly you can see 20 meters away, but visibility can diminish in certain areas or punctually. In the Banda Sea, visibility is good up to excellent and can reach 50 meters!

## Water temperature

Water temperature is 28-29 °C in the all area.





An amazing ride with the dinghies into the channels between forest covered quartz islets will allow us to hear and see cacatoes and hornbills while turtles and rays are into just about 2 meters of water. We will also observe an impressive display of primitive rock arts on a cliff. Leaving Triton bay and crossing to Misool, we will dive the small archipelago of Pisang islands (walls, pinacles, numerous eagle and marble rays) before to reach Misool where stand the most beautiful dives of Raja Ampat.



Our cruises including Triton Bay & Misool offer some of the most beautiful dives in Indonesia with an incredible diversity. There are an interesting alternative for the divers who already dove the Raja Ampat.

In Triton Bay, the black coral forests, the incredible giant soft corals reaching up to the surface, and the abundance of critters will delight the most demanding divers. The ice on the cake are the whale sharks that stay under the fishing plateforms called "bagans".



### Some of the species:

- Whale sharks, Barracudas, Surgeonfishes, Bumphead parrot fishes, Trevallies and giant trevallies, spadefishes, Napoleon wrasse, wobbegongs, tunas, bonitos, manta rays, marble rays eagle rays, mobulas, walking sharks, zebra sharks, etc..
- Seahorse, frogfish, leaf fish, scorpionfish, ghost pipe fish, coleman shrimps, etc...

- Black corals forests, gorgonian fields, soft corals , gorgonian fields,



### Navigation and itinerary

On the right the map showing the cruise itinerary. The itinerary varies slightly between each cruise depending on weather conditions, currents, visibility and diving. Distances are relatively short: only two full nights of sailing, the others taking place between dives or during very early morning. See the full program [here](#)

### Weather

The weather is rather variable; even if it is the "dry" season in this region can be expected to rainfall showers. Temperatures of about 30 ° C. Generally calm sea with a few temporary storms; slight swell in the most

### Banda sea

We chose the Banda Islands as a strong point of this unique cruise for their historical past (former Dutch counter starting point of a road with spices) and yet still uncrowded. We should have the opportunity to visit the village and the fort of Banda Neira as well spice plantations, sourcing from local producers and admire the many mandarin fish in the port.

### Misool

Excellent for the wide angle, undersea life, mantas, lots of fishes... Very coloured soft corals and gorgonas fields. Macro subjects nonetheless with many small seahorses.





## Domestic flights (international airport suggested: Jakarta)

From Jakarta to Saumlaki (Saumlaki is Jakarta time + 2):

Airlines	Jakarta-Saumlaki	Rate	Luggage
 Garuda Indonesia <i>The Airline Of Indonesia</i>	23:45 - 09:30 (departure the night before)	€440	20 kg (+23 kg)
 Lion Air	01:30-10:10	€295	20kg (+2 euros/additional kg)

From Sorong to Jakarta (Sorong is Jakarta time + 2)

Airlines	Sorong-Jakarta	Rate	Luggage
 Garuda Indonesia <i>The Airline Of Indonesia</i>	08:25 - 10:05 (direct flight) 14:35 - 18:40 (Via Makassar)	€290	20 kg (+23 kg)
 Batik Air	07:15 - 10:40 (direct flight) 14:05 - 17:15 (short transit)	€150 €150	20 kg (+2€/ Kg above)

Although the hand luggage shouldn't be weighed, it is recommended to stay in a reasonable range (hand luggage standard : 7 kg).

NB: air fares need to be confirmed at the time of booking.

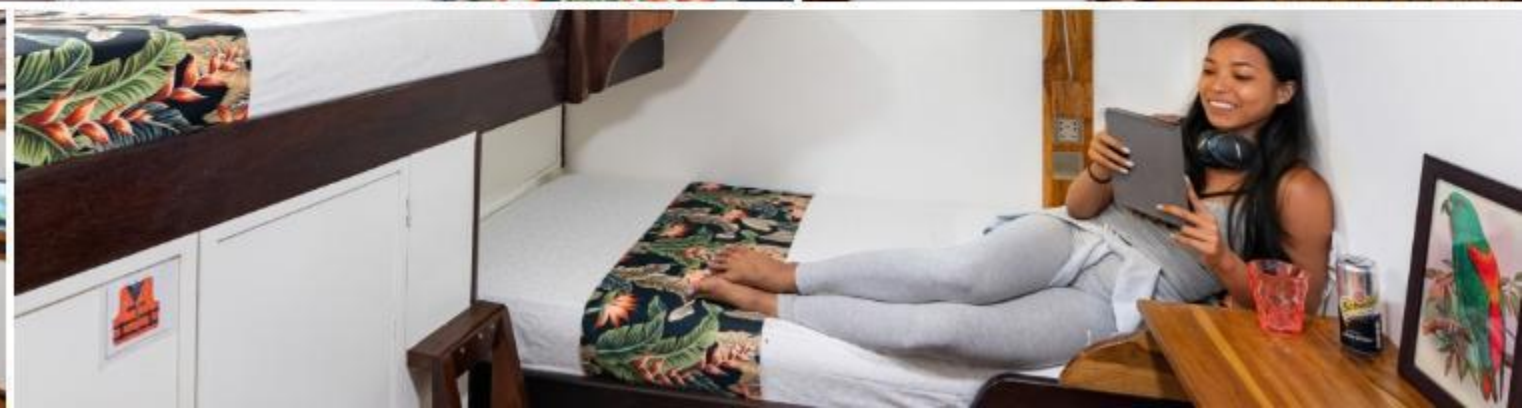
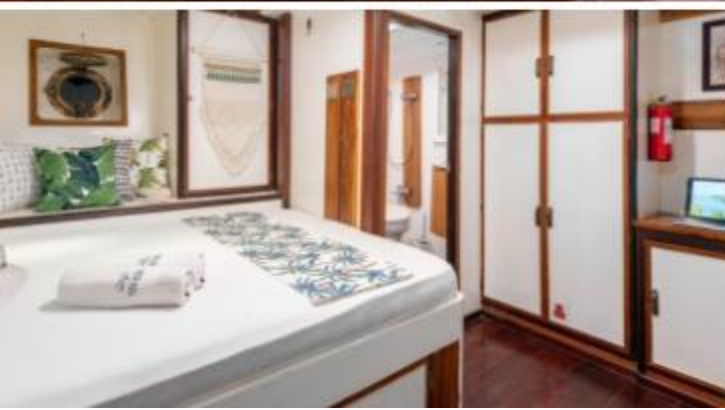


# SEA HORSE: Boat specifications

## 8 air-conditioned Cabins with ensuite bathroom and hot water

- \* 33 m x 8,5 m
- \* 16 divers
- \* 12 crew members - 4 dive guides - 1 cruise director-diving instructor

- \* 5 cabins with TWIN beds, lower deck
- \* 1 cabins with DOUBLE bed + 1 TWIN bed, lower deck
- \* 2 cabins with DOUBLE bed "Sea view", main deck























NAME	NO	GUIDE	GROUP	DATE
MARKET	1	Bob		
JOHN	2		1	1
JOHN	3			
JOHN	4			
JOHN	5			
JOHN	6			
JOHN	7			
JOHN	8			
JOHN	9			
JOHN	10			
JOHN	11			
JOHN	12			
JOHN	13			
JOHN	14			
JOHN	15			
JOHN	16			
JOHN	17			
JOHN	18			
JOHN	19			
JOHN	20			
JOHN	21			
JOHN	22			
JOHN	23			
JOHN	24			
JOHN	25			
JOHN	26			
JOHN	27			
JOHN	28			
JOHN	29			
JOHN	30			
JOHN	31			
JOHN	32			
JOHN	33			
JOHN	34			
JOHN	35			
JOHN	36			
JOHN	37			
JOHN	38			
JOHN	39			
JOHN	40			
JOHN	41			
JOHN	42			
JOHN	43			
JOHN	44			
JOHN	45			
JOHN	46			
JOHN	47			
JOHN	48			
JOHN	49			
JOHN	50			
JOHN	51			
JOHN	52			
JOHN	53			
JOHN	54			
JOHN	55			
JOHN	56			
JOHN	57			
JOHN	58			
JOHN	59			
JOHN	60			
JOHN	61			
JOHN	62			
JOHN	63			
JOHN	64			
JOHN	65			
JOHN	66			
JOHN	67			
JOHN	68			
JOHN	69			
JOHN	70			
JOHN	71			
JOHN	72			
JOHN	73			
JOHN	74			
JOHN	75			
JOHN	76			
JOHN	77			
JOHN	78			
JOHN	79			
JOHN	80			
JOHN	81			
JOHN	82			
JOHN	83			
JOHN	84			
JOHN	85			
JOHN	86			
JOHN	87			
JOHN	88			
JOHN	89			
JOHN	90			
JOHN	91			
JOHN	92			
JOHN	93			
JOHN	94			
JOHN	95			
JOHN	96			
JOHN	97			
JOHN	98			
JOHN	99			
JOHN	100			

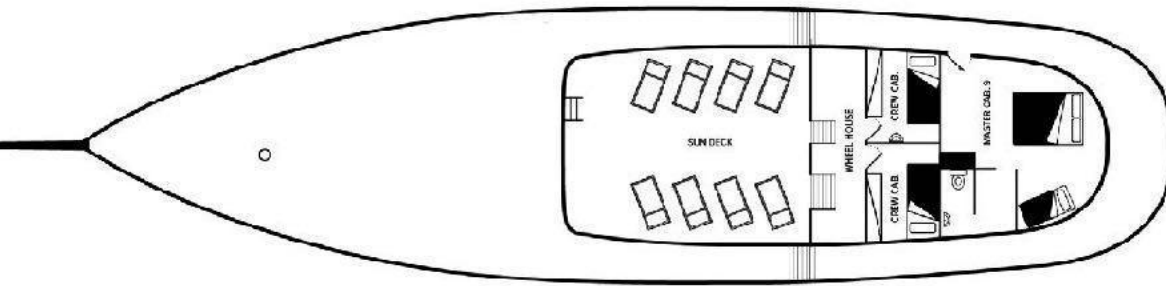




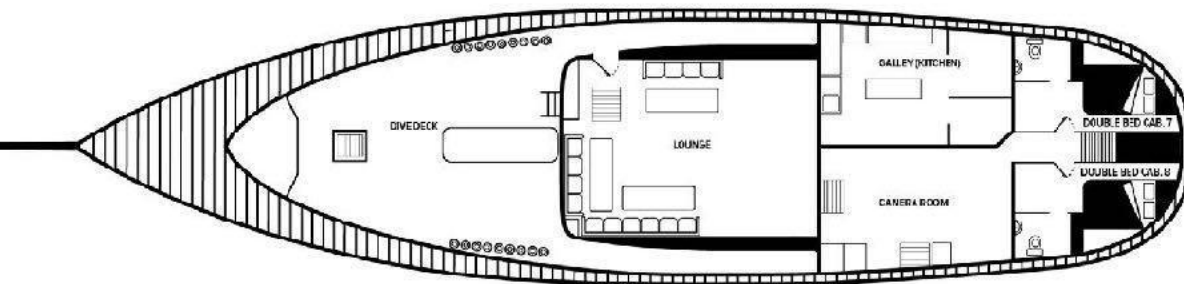


## Layout of the Boat

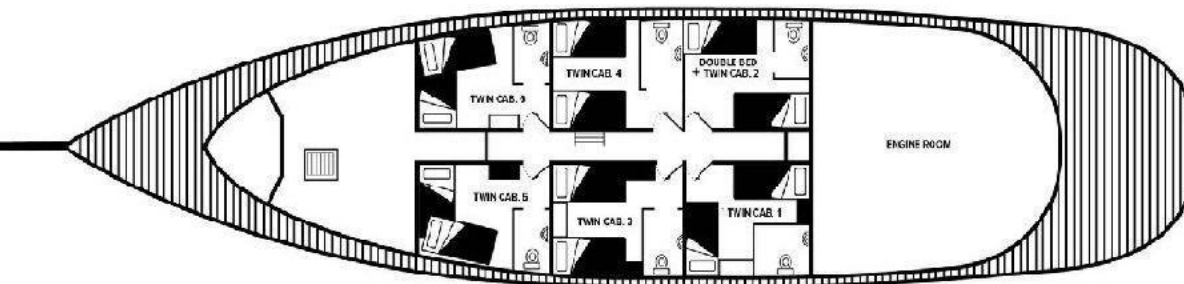
UPPER DECK



MAIN DECK



LOWER DECK



### The team at your service

12 crew members  
4 dive guides  
1 skipper / diving instructor

### Technical part

Engine:	M.A.N. 2866 LXE Marine Turbo Diesel
400 HP	
Generators:	1 x Mitshubishi 40 KVA 220-380 v 1 x Mitshubishi 60 KVA 220-380 v 1 x Yammar 22 KVA 220-380 v
Fresh water:	11,000 litres of fresh water storage, 6,000 litre per day water maker
Compressors :	2x Bauer Mariner HP breathing air compressors 1x CompAir Low pressure Screw Compressors with membrane for NITROX
Navigation:	EPIRB emergency locator,, Furuno 90 NM radar, 2 x GPS w/Plotter and Depth Sounder Furuno
Communication:	Sat-phone, FM & SW Radio, 4 VHF and SSB Radio
Dinghies:	Two 6.5 meter Aluminium boats equipped with 100 HP Yamaha 4 strokes engines, VHF radios and depth sounders



## Diving organisation on MSY SEAHORSE

### Number of dives (minimum 52)

- No diving the day of departure
- 3 dives / day every day of the cruise - one dive is usually sacrificed for land excursion to Wayag-, and another one eventually for the Bird of paradise excursion.
- 6 Night dives.
- 1 dive the day before disembarking, maybe 2 according to your flight schedule (24h/No FLY).

### Schedule & standards

- |                          |                                |
|--------------------------|--------------------------------|
| • 1st dive:.....07:00am  | • Dive time: 60 minutes        |
| • 2nd dive: 10:30am      | • Maximum Depth : 35 meters    |
| • 3rd dive: .....02:30pm | • Dives into the safety curves |
| • Night dive: 06:30pm    | • Bearing systematic security  |

Due to the large number of dives and the remoteness of the location, we urge divers to stay within the safety curve, to comply with a maximum depth of 35 meters, and to systematically perform a safety stop.

Depending on the guests dive experience, aspirations (photography, macro, etc), and eventual use of nitrox (free for certified divers), the cruise director will arrange the diving groups. These groups are made up of four divers and a dive guide. The dive guides are rotating on a daily basis. Each diver is given a dive tank (DIN & INT available, no need for adapters) and a single location for the duration of the cruise.

A briefing will be conducted by the director of cruises or one of the guides before each dive. It will provide guidance on the site topography, depths, currents and potential hazards, as well as on marine life and the species represented.

The staff carries your tank between the MV Ambai and the dinghies and back. to the dinghies, tanks are disposed in slots and the guide will help you to gear just before to roll back for the dive.

Identification books of flora and local fauna are available on board, and the dive guides or the skipper will always help you to identify the strange animal you just saw underwater!

\* There are some dive equipment to rent on board: However, all sizes are not necessarily available, so please book for it before the cruise.

\* Our cruises are open to divers Padi Advanced Level 2 or equivalent with at least 50 dives logged. Less experienced divers can also participate with a specific supervision that have to be arranged before the cruise.

\* An insurance covering medical evacuation and diving accidents is highly recommended. We will request the participants to fill up on board a statement of fitness for the dive activities.

\*We will ask you to carefully respect the fauna and flora: have adequate buoyancy to avoid touching the substrate or break any corals; do not touch the animals, do not collect anything; do not to harass wildlife to photography and moderate the number of flashes you impose on them. The use of gloves is not allowed.

\*The divers should always carry a marker buoy.

\*Thank you to read our rules of diving [here](#). By booking a cruise with Wallacea you agree with these few basic rules.



## The cruise rate

### Includes

- Accommodation in a shared twin or double cabin.
- All meals & snacks. Drinking water, soft drinks and hot drinks
- All guided dives (1 guide / 4 divers maximum)
- Nitrox
- Aluminium tanks (12 lts), weights and belts
- Airport-boat transfers from/to the closest airport (departure and arrival).

### Doesn't include

- Park, port and anchorage fees: 200 € (to be settled cash on board)
- International and domestic flights
- Alcoholic beverages (you can BYOB), espresso
- Diving equipment rental (see pricing below)
- 100 cf (15 litre) tanks : 65 € / cruise
- Crew gratuities
- Massage

## Good to know

- All extras are payable in cash on board. We can receive payment by credit card. with 3% charge on top.
- Currencies accepted on board: €, USD, CHF, IDR.
- Tipping: they reflect your level of satisfaction with the service on board. As an indication in the area , this is 5%-10% of the cruise rate.
- Provided on board: towels and toiletries, soap, shampoo and toothpaste.
- Electrical outlets round European type.
- Room for storage and loading photos / videos and accessory devices with many outlets. Taken in the cabins and bathrooms also. Hair dryer available on request.
- Available on board: rods and hooks in stainless, € 10
- 2 complimentary Kayaks

**YOUR PASSPORT VALIDITY MUST BE AT LEAST 6 MONTHS  
AFTER THE SCHEDULED RETURN DATE**



## ADDITIONAL INFORMATION

### Plan to extend your journey after the cruise?

Our last project **TOMPOTIKA DIVE LODGE**, intimate resort in East Sulawesi is made for you!

6 bungalows by the sea and amazing dives!

**-10% on our packages if your stay is just before/  
after your cruise !**



### Visa

Since May 2016, nationals from 169 countries are dispensed of visa and can enter the Indonesian territory for a maximum of 30 days (not renewable). You can check the list of these countries by following this link

<http://www.topbali.com/indonesia-visa/>

### Insurance

An insurance covering medical evacuation and diving accidents is compulsory. It will be requested upon arrival on board.

### Check in - Check out

- Check in the day of the cruise start and check out at the end of it, before 1pm.

### Diving equipment rental rate

• Complete regulator with octopus and pressure gauge	10€/ day
• BCD	10€/ day
• Wetsuit	10€/ day
• Torch	10€/ day
• Dive Computer	10€/ day
• Fins	5€/ day
• Diving mask	5€/ day



# SCHEDULE CRUISES

NOV-APRIL  
Raja-Ampat

APRIL-MAY  
Halmahera

JUL  
Wakatobi

AUG-SEP  
Komodo

SEPT-OCT  
Banda Sea

OCT- NOV  
ROF- Triton Bay



## To contact us

Mobile Serge: +62 812 8616 6630 (whatsApp / SMS)

Mobile Akim: +62 812 3933 2224 (whatsApp / SMS)

Mobile Jerome: +62 812 4494 2028 (whatsApp / SMS)

Skype: [live:info\\_635824](https://www.skype.com/user/info/635824)

Office Jakarta: +62 21 7500 577