



DUNE Black Manta



# Full South

## 7 Nights Itinerary

North & South Gaafu Atolls,  
Fuvahmulah, Addu Atolls

## Best Period

January to April

## Port/Airport

Kooddoo - Gan  
Gan - Kooddoo

*\*Route is given as an example and is submitted to weather conditions and can be modified*

[liveaboard.dune-world.com](http://liveaboard.dune-world.com)



Discover the underwater paradise of Maldives!

# Full South

## Discover the South Atolls of the Maldives: A Secret Haven for Diving Lovers

Set off on an unforgettable diving journey aboard the Dune Black Manta Liveaboard, exploring the South and North Gaafu Atolls of the Maldives. Renowned for their unspoiled beauty, these atolls feature some of the region's most immaculate and untouched dive sites. Immerse yourself in vibrant coral reefs bustling with marine life, where encounters with manta rays, whale sharks, and an array of colorful reef fish await.

Dive into the wonders of the North and South Gaafu Atolls, celebrated for their stunning coral landscapes and opportunities to encounter rare marine creatures. These atolls provide the excitement of uncovering secluded dive sites, showcasing pristine reefs and an incredible variety of marine life that will captivate you. Ideal for adventurous explorers, each dive promises a unique and unforgettable experience in these untouched waters.

The underwater scenery here is both dramatic and serene, offering a perfect mix of excitement and tranquility as you explore the atoll's hidden gems. Between dives, relax on pristine beaches and immerse yourself in the rich cultural heritage of the Maldives, making this expedition a perfect blend of adventure and relaxation.





# 7 NIGHTS

## FULL SOUTH ROUTE ITINERARY

### DAY 1 ARRIVAL

Arrive at the international airport, proceed with transfer via domestic flight to Gan or Kooddoo and board the ship. and there we will have a briefing on board, document processing, and dinner.

### DAY 2 NORTH GAAFU ATOLL

Begin with a check dive at Kooddoo Corner, where you'll encounter green turtles, Napoleons, and plenty of small reef fish. Continue to Vilingili Kanduu, a renowned dive site featuring a stunning wall of grey reef sharks and eagle rays, finishing with a drift along a turtle house reef. Conclude the day at Kooddoo Kanduu, where schools of grey reef sharks and dogtooth tunas create an unforgettable diving experience.

### DAY 3 NORTH GAAFU TO SOUTH GAAFU ATOLL

Begin your adventure at Vilingili Kanduu, a dive site full of excitement and marine life. Next, Nilandoo Kanduu, where you'll encounter grey reef sharks, eagle rays, barracudas, and impressive schools of jackfish, making it a truly unforgettable experience. Wrap up at Kondey Out with a spectacular drift dive along the outer reef of Kondey Island. Here, you'll glide past vibrant marine life, including turtles, jackfish, and batfish, while soaking in the beauty of the underwater world.

### DAY 4 SOUTH GAAFU ATOLL

In Kondey Kanduu, various pelagic fish can be spotted, with dogtooth tunas hunting in the channel. Then Marea Kanduu, a small shallow channel, is rich with pelagic and reef fish. Finally At Gemanafushi Corner, enjoy a drift dive with jackfish and eagle rays.

*\*Route is given as an example and is submitted to weather conditions and can be modified*



# 7 NIGHTS

## FULL SOUTH ROUTE ITINERARY

### DAY 5

### FUVAHMULAH ATOLL

Fuvamulah House Reef offers an incredible diving experience, renowned as one of the best spots in the Maldives to encounter a variety of large sharks. From tiger sharks to hammerheads and other majestic species, this dive site promises unforgettable encounters with some of the ocean's most impressive predators, making it a must-visit location for any diving enthusiast.

### DAY 6 & 7

### ADDU ATOLL

Kuda Kandhu is a small channel bustling with marine life, featuring schools of jackfish, snappers, and barracudas for a lively dive. Next, head to Maa Kandhu, a famous manta cleaning station with excellent visibility, perfect for capturing these majestic creatures on video. Lastly, visit Koatey Faru, a marine protected area with stunning coral life and large fish schools, offering a colorful and unforgettable diving experience.

### DAY 8

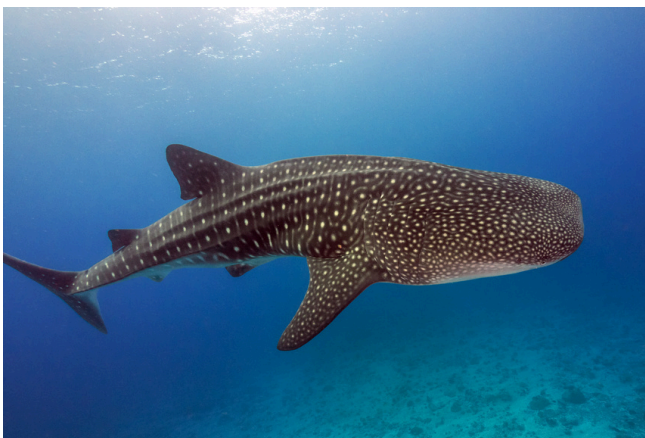
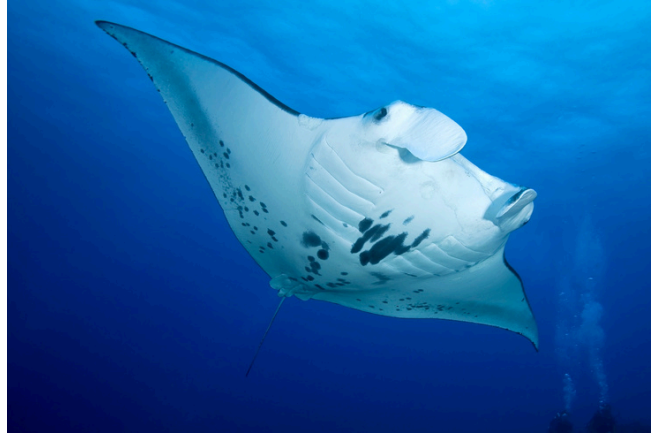
### DEPARTURE

As the trip ends, enjoy breakfast on board before our crew arranges your airport transfer. We're happy to assist with plans or accommodation bookings. Time to come back home with fantastic memories!

*\*Route is given as an example and is submitted to weather conditions and can be modified*



# FULL SOUTH GALLERY






# THE BOATS


## DUNE BLACK MANTA




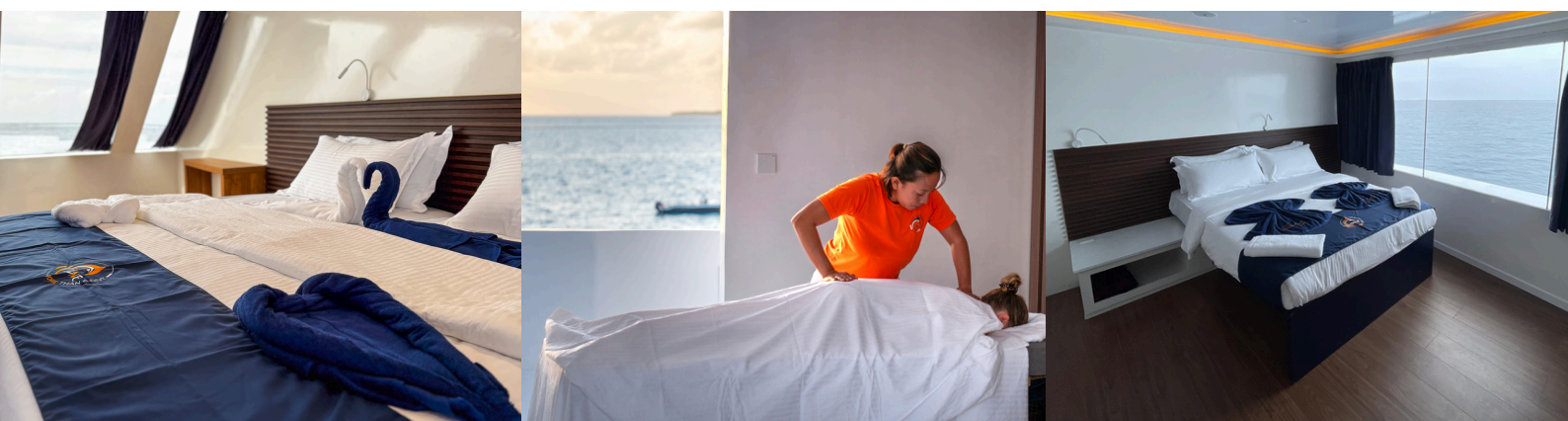
Welcome to DUNE Black Manta Liveaboard! Dive into luxury and adventure amidst the Indian Ocean's splendor. With spacious cabins, gourmet dining, and attentive service, your journey promises unforgettable moments. Explore vibrant reefs with panoramic views or join thrilling excursions to remote dive sites. Dive Dhoni offers adrenaline-fueled water sports for the daring. Welcome aboard for a voyage of a lifetime with DUNE Black Manta Liveaboard.

 **Total Cabin:** 16 Cabins, with convertible double beds (standard, deluxe & sea view cabin)

 **Entertainment:** Wi-Fi, Flatscreen TV, Sound System

 **Safety:** Oxygen therapy, AED, First Kit Aid, Life jacket, Satellite phone, fire alarm system

 **Diving Boats:** 1 Dhoni & 1 Speedboat



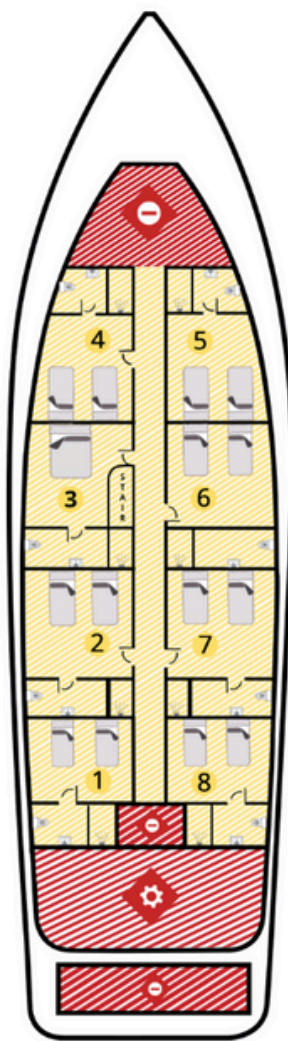


# BOAT LAYOUT

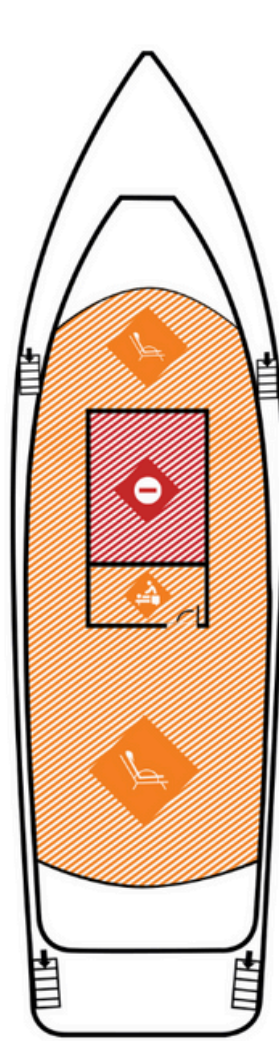
## DUNE BLACK MANTA



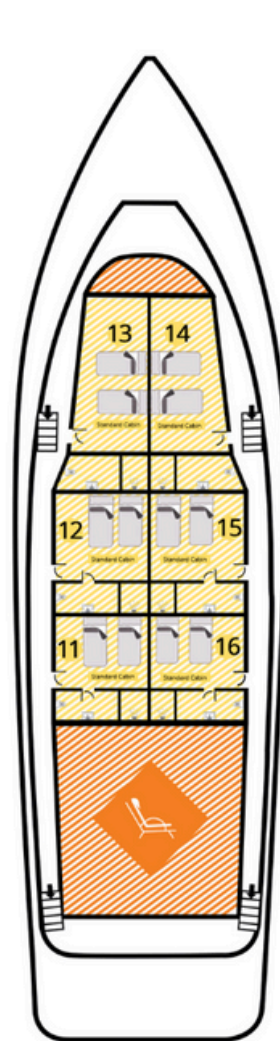
MAIN DECK



LOWER DECK



HIGH DECK



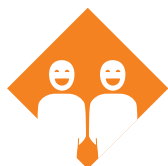
UPPER DECK



ACTIVITY AREA



DIVING AREA



FRIENDLY AREA



DINING ROOM



COMFORT ZONE



PRIVATE  
COMFORT  
ZONE



CABINS



RESTRICTED  
TECHNICAL  
ZONE



KITCHEN



ENGINE ROOM



STAFF ONLY



FIRST-AID  
KIT  
Trousse de  
premiers soins



RESTROOMS  
Toilettes



# ITINERARY MAP

## 7 NIGHTS TRIP







# GREEN COMMITMENT

Our company is proud to have obtained the Manta Trust, Green Fins & Sulubaa'i labels, testifying to our commitment to the environment with actions such as:

- Develop education programs for local communities
- Protect manta rays/mobulas through research, education, and collaboration
- Participate in beach and ocean cleanups
- We are committed to protecting marine life and we anchor most of the time, but never on the reef always on sand.
- Collect data to help understand marine litter.
- Avoid all chemicals and toxic products that could enter the ocean from our boat.
- Protect Sharks through research, education and collaboration

## OUR VALUES

We believe that we have a responsibility to protect the underwater biodiversity and we are determined to do this. We teach all our divers environmentally responsible expedition techniques to minimize our impact on the marine environment. We also educate our guests on environmentally friendly expedition practices. Beyond the marine environment, we are also committed to eco-responsible behavior on our boat, which is partly built with renewable materials. We reduce our water and energy consumption through resource-efficient practices. We also offer local and seasonal meals to limit the importation of international products. By traveling with us, you will be maximizing your contribution to the preservation of the Indonesia environment for future generations. Come and discover the underwater wonders in a responsible way.

## Our Partnerships:





# PRACTICAL INFORMATION

To start your incredible diving adventure, we have compiled some essential information to help you prepare. This includes details on diving requirements, various accommodation options, dining choices, and airport pick-up services. Whether you're an experienced diver or new to the sport, knowing these key points will ensure you have a smooth and enjoyable experience. Read on to find out everything you need to know before you dive into this unforgettable journey.



## DIVER'S LEVEL

Level 2\* CMAS or AOWD with 50 dives required.  
Open Water Divers must obtain AOWD at the trip's start.



## FOOD

On board, both local cuisine and international menus will be served.



## ACCOMMODATION

Accommodation is based on double shared cabin. Beds in some cabins can be moved to form a double bed or 2 single beds. A supplement is charged for single use of a cabin. Cabins categories (standard, superior or seaview) are subject to different tariffication if pre-booked.



## VISA & TRANSFERS

A DUNE Maldives representative will meet passengers at the airport with a "DUNE" sign, just outside the arrival hall. For Malé cruises, transfers to the boat are via Dhoni from the airport marina (20 minutes). The first transfer is at 2 pm, and the return transfer is after breakfast on the last day.



# PRICE INCLUDED & NOT INCLUDE

## Price Include

---

- Transfers from the airport to the boat and from the marina.
- Double/twin shared cabin accommodation.
- Guides.
- 12 liter aluminum cylinders + DIN/Int, and diving weights.
- Professional and experienced crew.
- Meals and all soft drinks on board (excluding beer, spirits, wine, espresso coffee).
- Minimum 16 dives, with additional dives possible depending on weather conditions and flight schedules.
- Bath towels are changed at least once during the trip, depending on the duration of the cruise.
- The selected sea route will take into consideration the passengers' wishes.
- Dune reserves the right to limit dives frequency due to : weather conditions, dive level and physical conditions of passengers, and no refund would be applied.
- Nitrox.
- Wifi : the speed is limited to emails and messages such as whatsapp or viber.
- Maldivian Government Tourist Tax.
- Service Charge.
- Jacuzzi (On board of Black Manta only).

## Price Not Include

---

- Domestic & International flights to and from Malé.
- The supplement for a superior or sea view cabin.
- The supplement for a single cabin.
- Drinks such as beer, wine, etc
- Transfers by speed boat, airplane, or seaplane depending on special routes or unscheduled arrivals and departures.
- Diving courses, rental equipment
- Dive insurance (mandatory)
- Massage Service (On board of Black Manta only)

*\*Surcharges: Dune Black Manta Liveaboard reserves the right to apply an appropriate surcharge to its prices should economic changes (such as exchange rates, fuel prices, etc) make a material difference to its pricing structure. - A minimum of 14 days' notice will be given before such a surcharge becomes effective. - No surcharge will be applied within 28 days of departure. - If the surcharge results in an increase of 10% or more to the price of the liveaboard, dive package/dive course, then cancellation with a full refund will be allowed. Notification of the intention to cancel must be made in writing within 14 days of the notification or the surcharge.*





**JOIN THE UNDERWATER REVOLUTION**  
[booking@dune-world.com](mailto:booking@dune-world.com) | [liveaboard.dune-world.com](https://liveaboard.dune-world.com)