



DUNE Black Manta

# Central Atolls

**10 Nights Itinerary**  
North Male, Vaavu,  
& South Ari

**Best Period**  
December to May

**Port/Airport**  
Hulhumalé - Hulhumalé

*\*Route is given as an example and is submitted to weather conditions and can be modified*

[liveaboard.dune-world.com](https://liveaboard.dune-world.com)



Dive Deep, Discover the Extraordinary

# Central Atolls

## Central Atolls of the Maldives: An Enchanting Liveaboard Journey

Embark on an extraordinary adventure with Dune Black Manta Liveaboard, exploring the breathtaking Central Atolls of the Maldives. Begin your journey with exhilarating dives in crystal-clear waters, where vibrant coral reefs teeming with diverse marine life await. Encounter manta rays, sharks, and an array of colorful reef fish as you explore the underwater wonders of this tropical paradise.

Complement your underwater exploration, where the crystal-clear waters and the rhythmic sway of the currents create the perfect setting for an exhilarating yet serene diving experience.

As you sail through the Central Atolls, immerse yourself in the Maldivian culture and enjoy visits to local islands. Experience the warmth of the local communities, discover traditional crafts, and indulge in the delicious flavors of Maldivian cuisine.

After your days of adventure, unwind on pristine beaches or relax aboard the Dune Black Manta Liveaboard. This journey seamlessly blends thrilling underwater exploration with cultural discovery, offering an unforgettable experience that celebrates both the natural beauty of the Maldives and the rich traditions of its people.



# 10 NIGHTS

## CENTRAL ATOLLS ROUTE ITINERARY

### DAY 1 HULHUMALÉ

Dune Representative will pick you up at Malé International Airport and bring you to the main boat. Enjoy a drink while listening to our Cruise Manager welcome briefing. Dinner will be served in the evening and you will spend the first night at Hulhumalé marina.

### DAY 2 NORTH MALE TO SOUTH MALE

The trip will start by discovering the dazzling long reefs of North Malé Atoll. Corals are abundant here, giving home to plenty of reef fish and macro species.

### DAY 3 SOUTH MALE TO VAAVU

This third day will let you explore the atoll of South Male, famous for the extraordinary topography of its dive sites and amazing channels. Grey reef sharks, eagle rays, tunas and a myriad of corals await the divers. We will then cruise to Vaavu Atoll for an unmissable night dive. There's nothing as exciting as diving with nurse sharks, sting rays, and jacks in their feeding frenzy.

*\*Route is given as an example and is submitted to weather conditions and can be modified*



# 10 NIGHTS

## CENTRAL ATOLLS ROUTE ITINERARY

### DAY 4 VAAVU TO FAAFU

Vaavu Atoll features superb drop offs, beautiful little caves and coral festooned walls. It is home to quite a lot of trigger fishes, but also black tip reef sharks, turtles, barracudas... The luckiest divers may even spot a hammerhead shark cruising its outside wall !

### DAY 5 FAAFU TO SOUTH ARI

Moving to the South of Ari Atoll, you will dive on beautiful pinnacles and be able to spot bigger marine life. Dive into this aquarium offered by mother nature and get a chance to meet the stars of the trip...

### DAY 6 SOUTH ARI

In the marine protected area of Mamigili, the whale sharks, regularly show up. Our crew will search for their presence and give you a chance to snorkel or even scuba dive with them. There are also many thilas and some wrecks in South Ari Atoll.

### DAY 7 SOUTH ARI TO NORTH ARI

We keep moving up to North Ari Atoll where channels are wider and the ocean is deeper. The currents attract many grey reef sharks, white tip reef sharks and even other large pelagic fish. When night falls, you will enjoy a barbecue dinner prepared by our crew on a nearby desert island.

*\*Route is given as an example and is submitted to weather conditions and can be modified*



# 10 NIGHTS

## CENTRAL ATOLLS ROUTE ITINERARY

### DAY 8 NORTH ARI

Multiple manta cleaning stations, extraordinary thilas and wreck with rich marine life are the highlights of this area of Ari Atoll. You will also find here eagle rays, hawksbill turtles, napoleon wrasse, school of blue-stripe snapper, batfish, and fusiliers. The day will end with a manta night dive. Admire the enormous manta rays feeding right in front your torch.

### DAY 9 NORTH ARI TO RASDHOO

One last glimpse at the beauties of North Ari Atoll, before moving to the tiny atoll of Rasdhoo. There, pristine reefs, manta rays and sharks are on the menu. Glide in the current and enjoy the ride, while admiring the fauna and landscapes all around.

### DAY 10 RASDHOO TO NORTH MALE

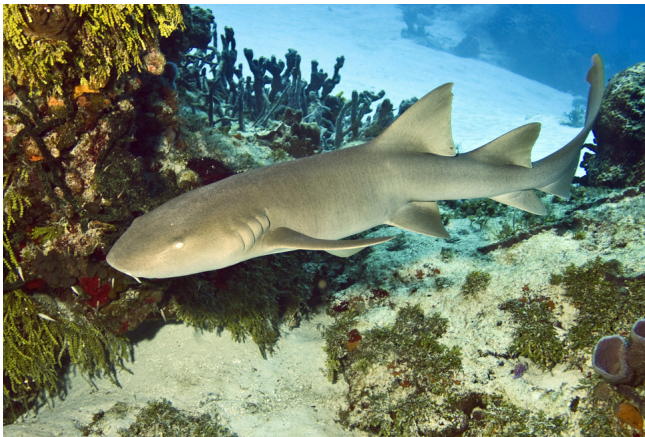
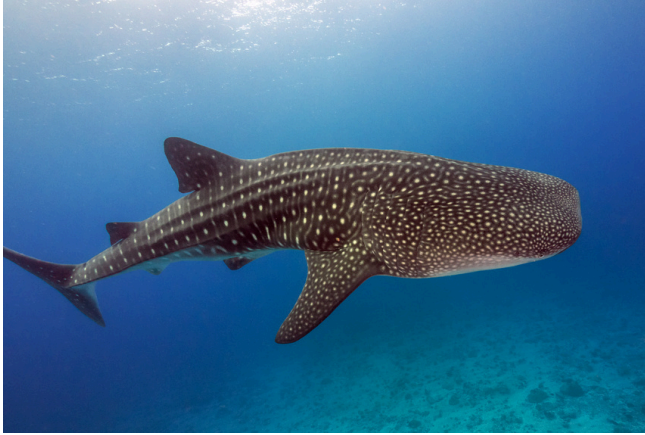
Dive in once more in Rasdhoo Atoll with the pelagic life and the cruise will head back to North Malé Atoll. Here you will find stunning long reefs, small caves, colourful corals with prolific marine and reef life. Take a closer look at the squirrelfish, bannerfish, oriental sweetlips, frogfish, and nudibranchs.

### DAY 11 HULLUMALE

Dive in once more in Rasdhoo Atoll with the pelagic life and the cruise will head back to North Malé Atoll. Here you will find stunning long reefs, small caves, colourful corals with prolific marine and reef life. Take a closer look at the squirrelfish, bannerfish, oriental sweetlips, frogfish, and nudibranchs.

*\*Route is given as an example and is submitted to weather conditions and can be modified*

# CENTRAL ATOLLS GALLERY






# THE BOATS


## DUNE BLACK MANTA




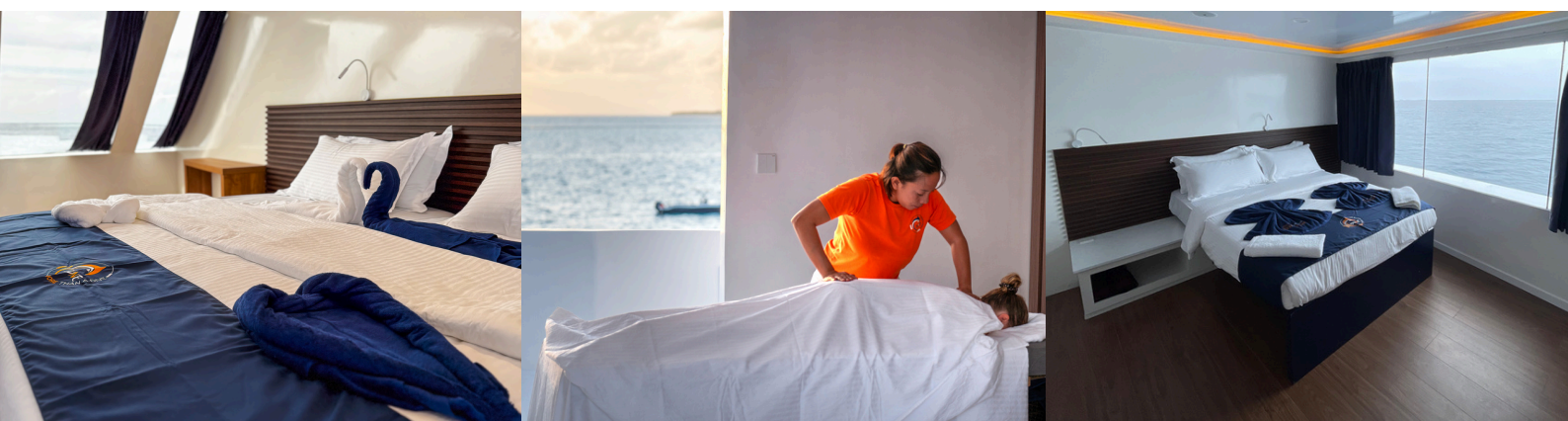
Welcome to DUNE Black Manta Liveaboard! Dive into luxury and adventure amidst the Indian Ocean's splendor. With spacious cabins, gourmet dining, and attentive service, your journey promises unforgettable moments. Explore vibrant reefs with panoramic views or join thrilling excursions to remote dive sites. Dive Dhoni offers adrenaline-fueled water sports for the daring. Welcome aboard for a voyage of a lifetime with DUNE Black Manta Liveaboard.

 **Total Cabin:** 16 Cabins, with convertible double beds (standard, deluxe & sea view cabin)

 **Entertainment:** Wi-Fi, Flatscreen TV, Sound System

 **Safety:** Oxygen therapy, AED, First Kit Aid, Life jacket, Satellite phone, fire alarm system

 **Diving Boats:** 1 Dhoni & 1 Speedboat



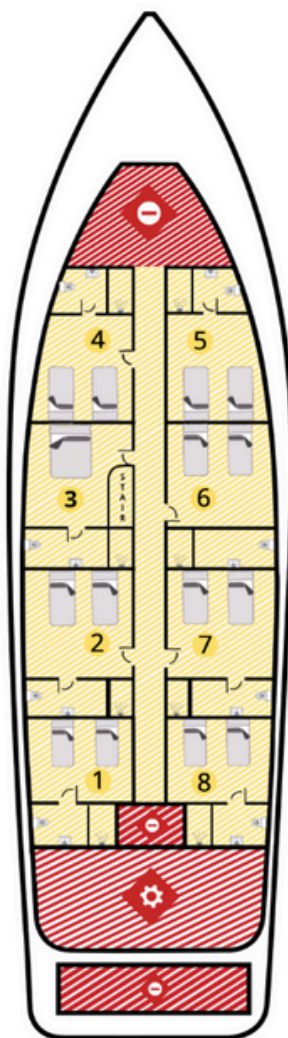


# BOAT LAYOUT

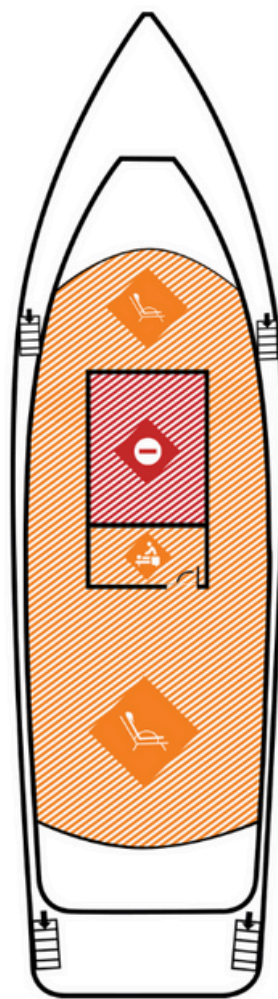
## DUNE BLACK MANTA



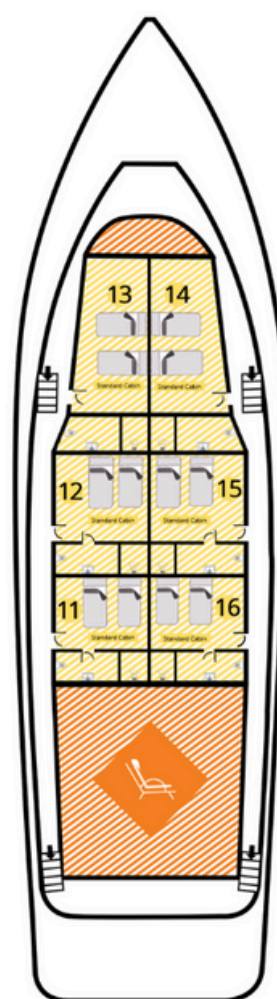
MAIN DECK



LOWER DECK



HIGH DECK



UPPER DECK



ACTIVITY AREA



DIVING AREA



FRIENDLY AREA



DINING ROOM



COMFORT ZONE



PRIVATE  
COMFORT  
ZONE



CABINS



RESTRICTED  
TECHNICAL  
ZONE



KITCHEN



ENGINE ROOM



STAFF ONLY



FIRST-AID  
KIT  
Trousse de  
premiers soins

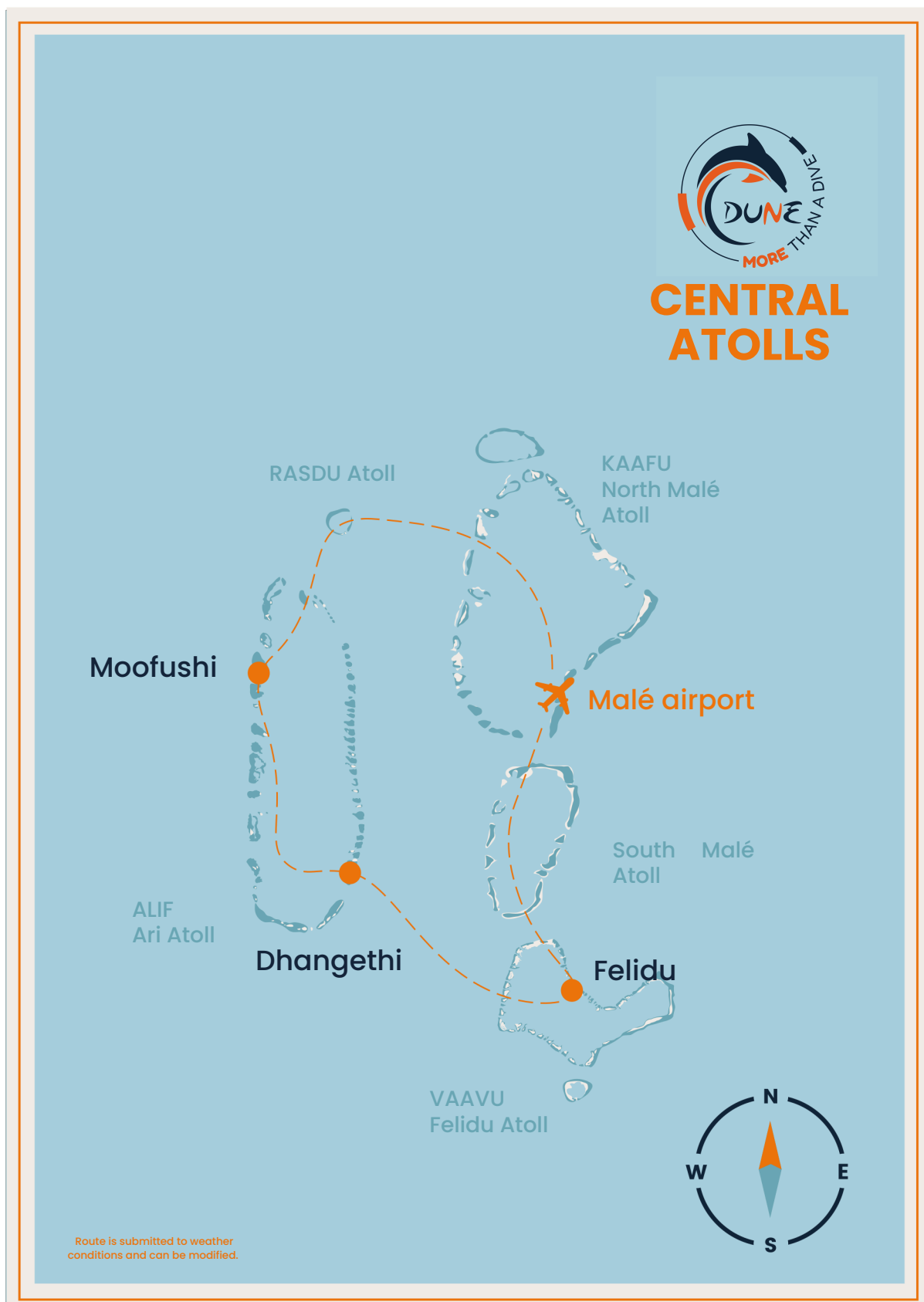


RESTROOMS  
Toilettes



# ITINERARY MAP

## 10 NIGHTS TRIP





# GREEN COMMITMENT

Our company is proud to have obtained the Manta Trust, Green Fins & Sulubaa'i labels, testifying to our commitment to the environment with actions such as:

- Develop education programs for local communities
- Protect manta rays/mobulas through research, education, and collaboration
- Participate in beach and ocean cleanups
- We are committed to protecting marine life and we anchor most of the time, but never on the reef always on sand.
- Collect data to help understand marine litter.
- Avoid all chemicals and toxic products that could enter the ocean from our boat.
- Protect Sharks through research, education and collaboration

## OUR VALUES

We believe that we have a responsibility to protect the underwater biodiversity and we are determined to do this. We teach all our divers environmentally responsible expedition techniques to minimize our impact on the marine environment. We also educate our guests on environmentally friendly expedition practices. Beyond the marine environment, we are also committed to eco-responsible behavior on our boat, which is partly built with renewable materials. We reduce our water and energy consumption through resource-efficient practices. We also offer local and seasonal meals to limit the importation of international products. By traveling with us, you will be maximizing your contribution to the preservation of the Indonesia environment for future generations. Come and discover the underwater wonders in a responsible way.

## Our Partnerships:





# PRACTICAL INFORMATION

To start your incredible diving adventure, we have compiled some essential information to help you prepare. This includes details on diving requirements, various accommodation options, dining choices, and airport pick-up services. Whether you're an experienced diver or new to the sport, knowing these key points will ensure you have a smooth and enjoyable experience. Read on to find out everything you need to know before you dive into this unforgettable journey.



## DIVER'S LEVEL

Level 2\* CMAS or AOWD with 30 dives is required. Open Water Divers must obtain AOWD at the start of the cruise to comply with local regulations.



## FOOD

On board, both local cuisine and international menus will be served.



## ACCOMMODATION

Accommodation is based on double shared cabin. Beds in some cabins can be moved to form a double bed or 2 single beds. A supplement is charged for single use of a cabin. Cabins categories (standard, superior or seaview) are subject to different tariffication if pre-booked.



## VISA & TRANSFERS

A DUNE Maldives representative will meet passengers at the airport with a "DUNE" sign, just outside the arrival hall. For Malé cruises, transfers to the boat are via Dhoni from the airport marina (20 minutes). The first transfer is at 2 pm, and the return transfer is after breakfast on the last day.

# PRICE INCLUDED & NOT INCLUDE

## Price Include

---

- Transfers from the airport to the boat and from the marina.
- Double/twin shared cabin accommodation.
- Guides.
- 12 liter aluminum cylinders + DIN/Int, and diving weights.
- Professional and experienced crew.
- Meals and all soft drinks on board (excluding beer, spirits, wine, espresso coffee).
- Minimum 24 dives, with additional dives possible depending on weather conditions and flight schedules.
- Bath towels are changed at least once during the trip, depending on the duration of the cruise.
- The selected sea route will take into consideration the passengers' wishes.
- Dune reserves the right to limit dives frequency due to : weather conditions, dive level and physical conditions of passengers, and no refund would be applied.
- Nitrox.
- Wifi : the speed is limited to emails and messages such as whatsapp or viber.
- Maldivian Government Tourist Tax.
- Service Charge.
- Jacuzzi (On board of Black Manta only).

## Price Not Include

---

- International flights to and from Malé.
- The supplement for a superior or sea view cabin.
- The supplement for a single cabin.
- Drinks such as beer, wine, etc
- Transfers by speed boat, airplane, or seaplane depending on special routes or unscheduled arrivals and departures.
- Diving courses, rental equipment
- Dive insurance (mandatory)
- Massage Service (On board of Black Manta only)

*\*Surcharges: Dune Black Manta Liveaboard reserves the right to apply an appropriate surcharge to its prices should economic changes (such as exchange rates, fuel prices, etc) make a material difference to its pricing structure. - A minimum of 14 days' notice will be given before such a surcharge becomes effective. - No surcharge will be applied within 28 days of departure. - If the surcharge results in an increase of 10% or more to the price of the liveaboard, dive package/dive course, then cancellation with a full refund will be allowed. Notification of the intention to cancel must be made in writing within 14 days of the notification or the surcharge.*





**JOIN THE UNDERWATER REVOLUTION**  
[booking@dune-world.com](mailto:booking@dune-world.com) | [liveaboard.dune-world.com](https://liveaboard.dune-world.com)