



WAKATOBI EXPLORATION AND EXPEDITION

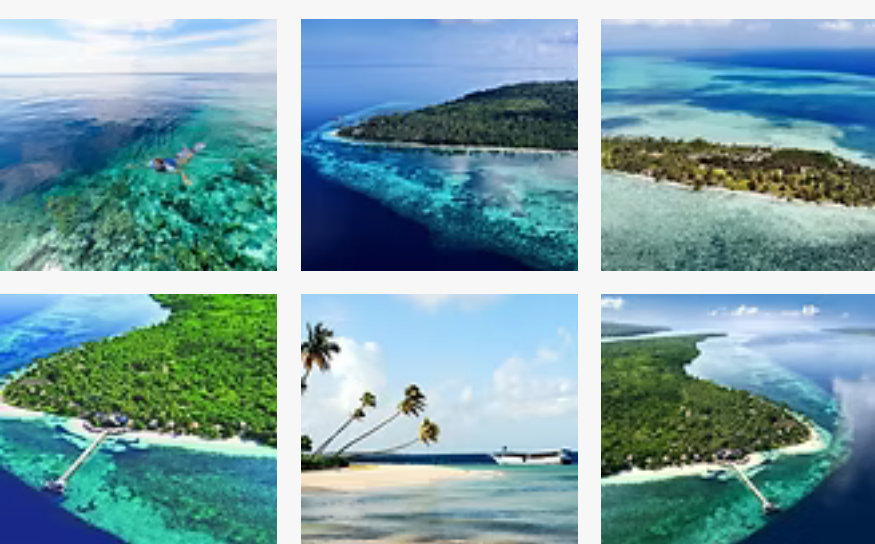
Not the typical Raja Ampat Liveaboard destination but way beyond!

This off beat 12D 11N [Dancing Wind](#) itinerary is epic. Going on this Indonesian Liveaboard includes a variety of dive sites which are rarely dived and often chosen depending on weather and sea conditions. Guests are required to check in before 12pm in Kendari to ensure a smooth start.

The liveaboard itinerary includes dives around [Wakatobi](#), followed by a crossing to [Komba Volcano](#). There, the itinerary includes three dives around Komba Volcano, followed by a trip to Alor. The dive sites in Alor are determined based on weather and sea conditions. So as you can see, this is really an exploration trip with a chance to go to remote sites along the way.

DAY 1

Kendari check-in not later than 12pm Upon arrival in Kendari, guests are required to check in before 12pm to ensure a smooth start to the itinerary. Please note that any changes to the dive sites may occur depending on weather and sea conditions.



DAY 2 - DAY 5

Dives around [different sites of Wakatobi](#) (Dive sites in Wakatobi include Roma, The Zoo, Table Coral city, Blade, Teluk Maya and Cornucopia)

On day 5 leave Wakatobi crossing to Komba volcano to continue the liveaboard adventure

DAY 6

Will be dedicated to exploring Komba Volcano with three dives. After the dives, we will cross over to Alor for further exploration. Please note that the itinerary is subject to change based on weather and sea conditions.

DAY 7

We will have the opportunity to do 3 to 4 dives. The specific dive sites will be determined based on the weather and sea conditions. Please keep in mind that the itinerary is subject to change for safety reasons.

DAY 8

We will visit Pura Beangabang for 3 to 4 dives before crossing over to Pulau Rusa. The dive sites at Pura Beangabang will be chosen based on the prevailing weather and sea conditions.

DAY 9

We will have the opportunity to explore Pulau Rusa with two dives before making our way to Lamalera. During our time at Pulau Rusa, we will carefully select the dive sites based on the current weather and sea conditions. Additionally, please be aware that the itinerary may be modified for safety reasons. After our visit to Lamalera, we will have a chance to experience a thrilling night dive before crossing over to Watupeni.

DAY 10

We will have the opportunity to embark on three to four dives in Watupeni. These dives will be carefully planned and adjusted according to the weather and sea conditions for the safety of all participants. Please note that the itinerary may be subject to changes for safety purposes.

DAY 11

Serbete or Pamana or pulau Babi The last two dives at this area will provide us with the opportunity to explore the vibrant coral reefs and encounter a diverse range of marine life. These dives will be a memorable way to conclude our underwater adventure before heading back to the mainland.

DAY 12

[Maumere](#) check out and departure. We will bid farewell to our diving companions and return to Maumere, where we will check out of our accommodations and prepare for our journey back home. It has been an incredible journey exploring the underwater wonders of this region, and we will cherish the memories we have made.